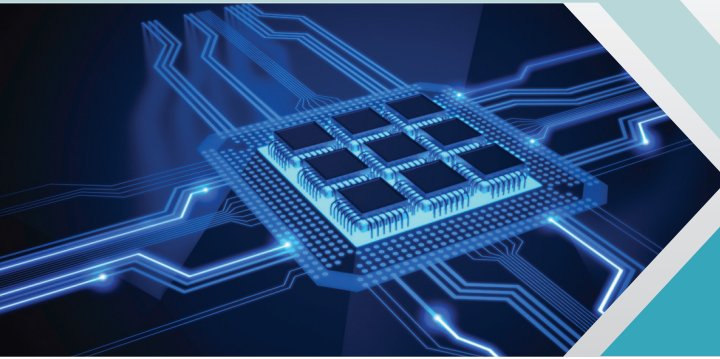








YOUR INNOVATIVE PARTNER

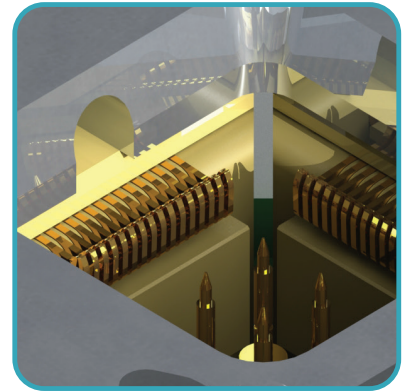


# EQT NEWS

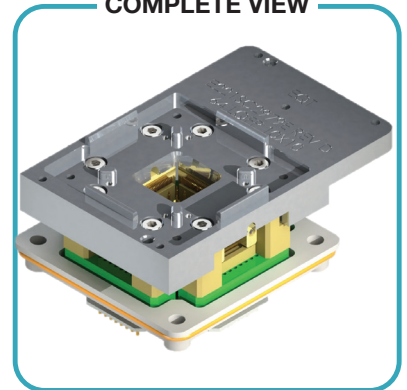
## ULTRA<sup>®</sup> HC SERIES CONTACTS

-  Consistent resistance repeatability due to one piece contact path
-  Economical due to one piece contact finger replacement concept
-  Customized Test Solution
-  Applicable for testing Automotive devices

DETAILED VIEW



COMPLETE VIEW



## CANTILEVER CONTACT SOLUTION



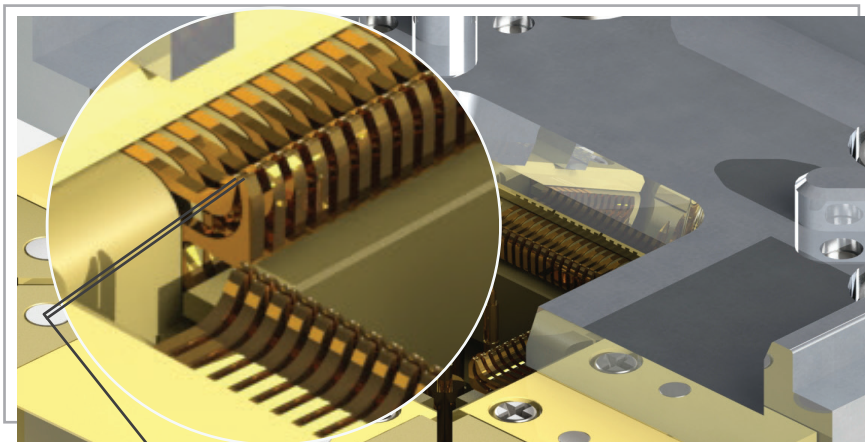
**EQUIPTEST ENGINEERING PTE LTD**

No. 1 Ubi View, Focus One #01-08 Singapore 408555 • Tel: +65 6578 9900 • Fax: +65 6578 9911  
www.equipstest.com.sg • Email: eqt@equipstest.com.sg

# ULTRA<sup>®</sup> CONTACTS HC SERIES

## TECHNICAL SPECIFICATION

MECHANICAL	Working CPH	mm	13.2	ELECTRICAL	Contact Resistance	mOhm	~ 20	
	Force @ CPH	grams	35 ~ 45		Current Carrying Capacity	100% Duty Cycle,A	5	
	Min Pitch	mm	0.5		Current Carrying Capacity	1% Duty Cycle,A	68	
	PCB Pre-Load	mm	0.2		Self Inductance	nH	4.7	
	DUT Compression	mm	0.4		Bandwidth	GHz @ -1dB	0.5	
	Tip Shape	(DUT Side) (PCB Side)	Radius Radius		MATERIAL	Base Material	Beryllium Copper Alloy	
	Temp	Deg C	-60°C ~ 180°C			Plating Material	Proprietary Gold	
Kelvin Force and Sense Pin Gap	µm, microns	60						



Force / Sense Gap

60µm



### EQUIPTEST ENGINEERING PTE LTD

No. 1 Ubi View, Focus One #01-08 Singapore 408555 • Tel: +65 6578 9900 • Fax: +65 6578 9911  
www.equiptest.com.sg • Email: eqt@equiptest.com.sg